

We provide Complete range of testing solutions for Heavy vehicles Testing including Trucks, Trailer, Tippers, Dumpers and other Earth moving and off Road vehicles, that could lead to high performance of vehicles and reduce the mean time between failure of machine and avoid loss of time and money, beyond certainly reducing the chances of accidents.

SERVICES OFFERED

Static Testing & Dynamic Testing

- ☉ Vehicle Chassis Analysis
- ☉ Load Test
- ☉ Residual Stress Analysis
- ☉ Stress Analysis
- ☉ Fatigue Analysis
- ☉ Ring Collapse Test
- ☉ Displacement & Deformation Analysis
- ☉ Tightening Stress measurement
- ☉ Vehicle on board Measurements
- ☉ MATLAB Analysis
- ☉ We welcome your Custom Test Requirements & more....

Our comprehensive services can also include supply of Sensors, adhesives, required tool kits for the job and data monitoring.

AREA OF APPLICATION

But not limited to....

- ☉ Behaviour Modelling of Parts
- ☉ Mean time between Failure/Breakdown
- ☉ Residual Stress Study
- ☉ Life Cycle Prediction
- ☉ Crash Testing Analysis
- ☉ Endurance Testing
- ☉ Understanding Vehicle Dynamics



HEAVY VEHICLE ENDURANCE TESTING



COMPANY

Record Tech Electronics is a 40 plus years old engineering company which has dedicated decades serving numerous client across Indian sub continent for various applications in automotive, Geo-technical, HVAC, Industrial and power/Energy sector. From Turn key projects to single channel data monitoring we service all and every customer(s).

INSTRUMENTATION

- ☞ Strain Gauges, KIT's, Adhesives, Coating Material & Accessories.
- ☞ Calibrated Bolt Gauges .
- ☞ Vehicle On board Measuring Systems.
- ☞ Crack Gauges.
- ☞ High Temperature Gauges.
- ☞ Displacement Transducers.
- ☞ Load Cells & Mounting Accessories.
- ☞ Data Loggers & Readouts.
- ☞ Pressure Transducers.
- ☞ Temperature Transducers.
- ☞ Wheel Torque Transducers.
- ☞ Brake Pedal Transducers.
- ☞ Steering Torque Transducers.
- ☞ Power Window Force

Transducers.

- ☞ 6-component wheel measurement system
- ☞ Force Analyser
- ☞ Custom Build Equipments.
- ☞ more....

INTRODUCTION

Testing is one of the very important phase of any development which not only yields the correctness of design but also emulates the data describing the performance of the designed machine or equipment. We provide complete solution for testing to provide complete characteristics of Vehicles dynamics such as load handling capacity to Torque or Braking load, etc. In short test to prove reliability, dependability and endurance of tested Vehicle. The tests usually yields damage levels, fatigue caused, and predicative data describing the characteristics of the material of machine in-order to tweak and turn the design parameters accordingly to handle that particular load and dynamic properties.

**RECORD TECH ELECTRONICS, B-18 INDUSTRIAL
ESTATE, ROORKEE UTTARAKHAND - 247667**

**GROW
STRATEGIZE
CONSOLIDATE
THINK BEYOND**



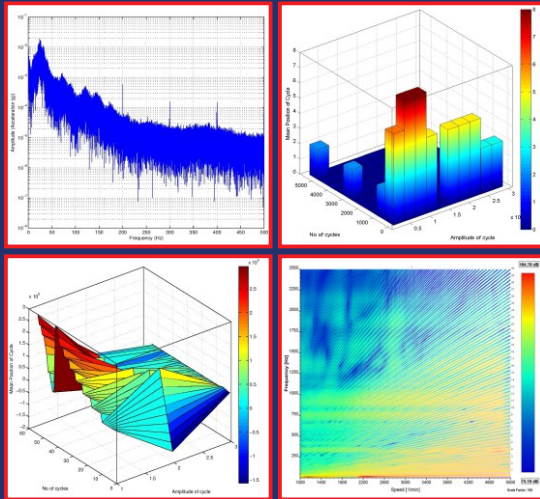
PH: +91-(0)1332-267511 | FAX: +91-(0)1332-267507
www.recordtek.com | sales@recordtek.com

ADVANTAGES

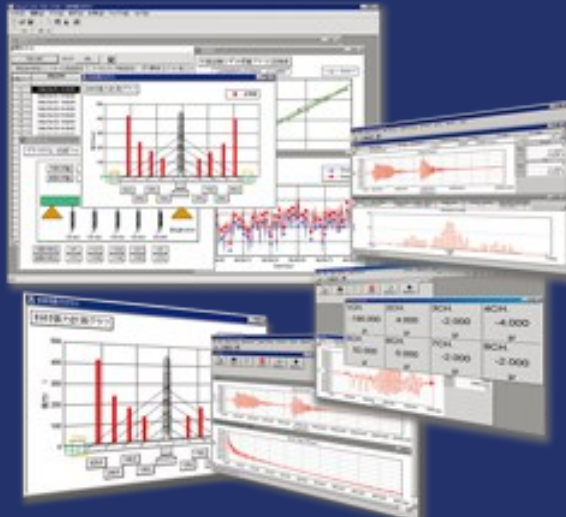
Static Testing & Dynamic Testing

- ⊙ Life Cycle Prediction
- ⊙ Opportunity to modify design
- ⊙ Less After market hassles
- ⊙ Design Validation & Verification
- ⊙ Insight Knowledge of the Vehicle

RANGE OF ANALYSIS



- FFT ANALYSIS**
- POWER SPECTRAL DENSITY**
- RAINFLOW COUNTING**
- CAMPBELL DIAGRAM**
- STRESS CONCENTRATION**



**Software Analysis
Mathematical Modelling**

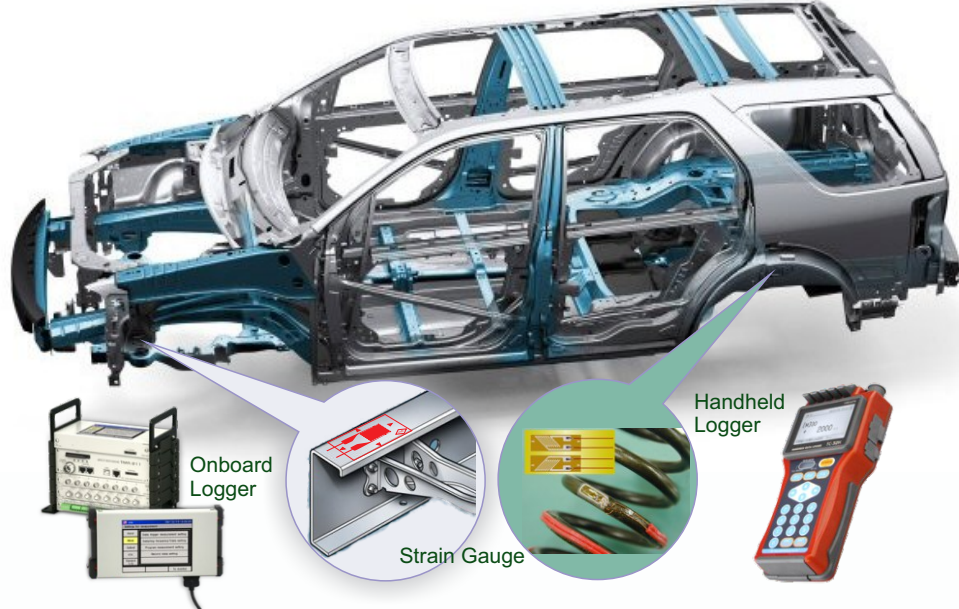
ACTIVITIES

Static Testing & Dynamic Testing

- ⊙ Equipment & Sensor Supply
- ⊙ Installation & Commissioning
- ⊙ Fixing of Gauges & sensors
- ⊙ Data Monitoring
- ⊙ Data Pre-processing and Streamlining
- ⊙ Data Reduction
- ⊙ MATLAB Code Development
- ⊙ Mathematical Model Testing over Data
- ⊙ Analysis Results Compilation
- ⊙ Auto Tool bases Report Generation



COMPLETE STRUCTURE ENDURANCE TESTING



What Can be Expected

Fast, accurate and reliable data to aid the understanding of the response of the product to in the field when subjected to operational conditions.

As per the need a static or dynamic test program/plan can be designed by us capturing the VOC.

A comprehensive report presents results in a summarized form with both tabular and graphical outputs for ease of comparison to the design calculations or operational conditions.

Customized Solution & Workflow Design

Very specific to automobile manufacture we offer our customized services of designing workflow for testing.

Its can be as basic as providing connectivity to ECU via XCP on CAN using A2L description files or simulate message traffic on a virtual CAN bus to a live network or ECU. Our Workflow design can be easily interface with CAN devices from Vector, Kvaser, PEAk-System, and National Instruments.

Our Success Story

We are in measurement business for over 40 years with dedicated automobile industry experience for over a decade.

Some of our work includes:

- Engine Stress Testing under Dynamic condition.*
- Wheel Torque Measurement.*
- Steering Torque Measurement.*
- Brake Pedal Force measurement.*
- Windshield Stress pattern analysis during curing and post under dynamic condition*
- Residual Stress Analysis*
- Stress Analysis during crash testing*
- Load Testing*
- Wheel 6-Component Force measurement*
- Smart Dynamic & Static Strain Measurement*
- Implementation of Digital Telemetry for data measurement*
- Wheel Alignment displacement measurement & Analysis*
- Calibration Service with ISO 17025 certification already under process.*

**CALL US NOW
+91-8979900000**